



United States  
Department of  
Agriculture



# FSA Disaster Assistance Programs: Assisting Farmers and Ranchers after Natural Disasters

**Farm  
Service  
Agency**

**[fsa.usda.gov](https://fsa.usda.gov)**

# Gilliam/Wheeler County Staff Introductions

## FSA

- Kara Lanthorn: Sherman County Executive Director, Shared Management for Gilliam/Wheeler County
- Adrianna Salutregui: Gilliam/Wheeler County Executive Director, Shared Management for Morrow County
- Kayla Mims: Program Analyst
- Kaycee Rogers: Program Analyst
- Josh Hanning: District Director

## NRCS

- DelRae Ferguson: Gilliam/Wheeler District Conservationist
- Jessica Jones: Gilliam/Wheeler Soil Conservationist
- Joel Verkruyse: Gilliam/Wheeler Soil Conservationist

# Gilliam/Wheeler County Staff Introductions

## SWCD

- Herb Winters: Gilliam County District Manger
- Norie Wright: Gilliam County Office Manager
- Roger Lathrop: Gilliam County Conservation Technician
- Jessica Gillen: Gilliam County Conservation Technician/Administrative Assistant
- Katie Garthwaite: Watershed Coordinator
- Cassi Newton: Wheeler County District Manager
- Ayla Morehouse: Wheeler County Conservation Manager
- Brooke Moore: Wheeler County Conservation Technician
- Kristin Neuburger: Wheeler County Conservation Technician
- Maria Rey: Wheeler County Office Assistance

## OTHER: Oregon Dept of Forestry

David Cappasso

# Morrow County Staff Introductions

## FSA

- Adrianna Salutregui: Gilliam/Wheeler County Executive Director, Shared Management for Morrow County
- Adam Doherty: Morrow County Executive Director
- Misty Haugen: Program Analyst
- Kim Thompson: Program Analyst
- Tasha Hollis: Program Analyst
- Jane Harrison: Farm Loan Officer

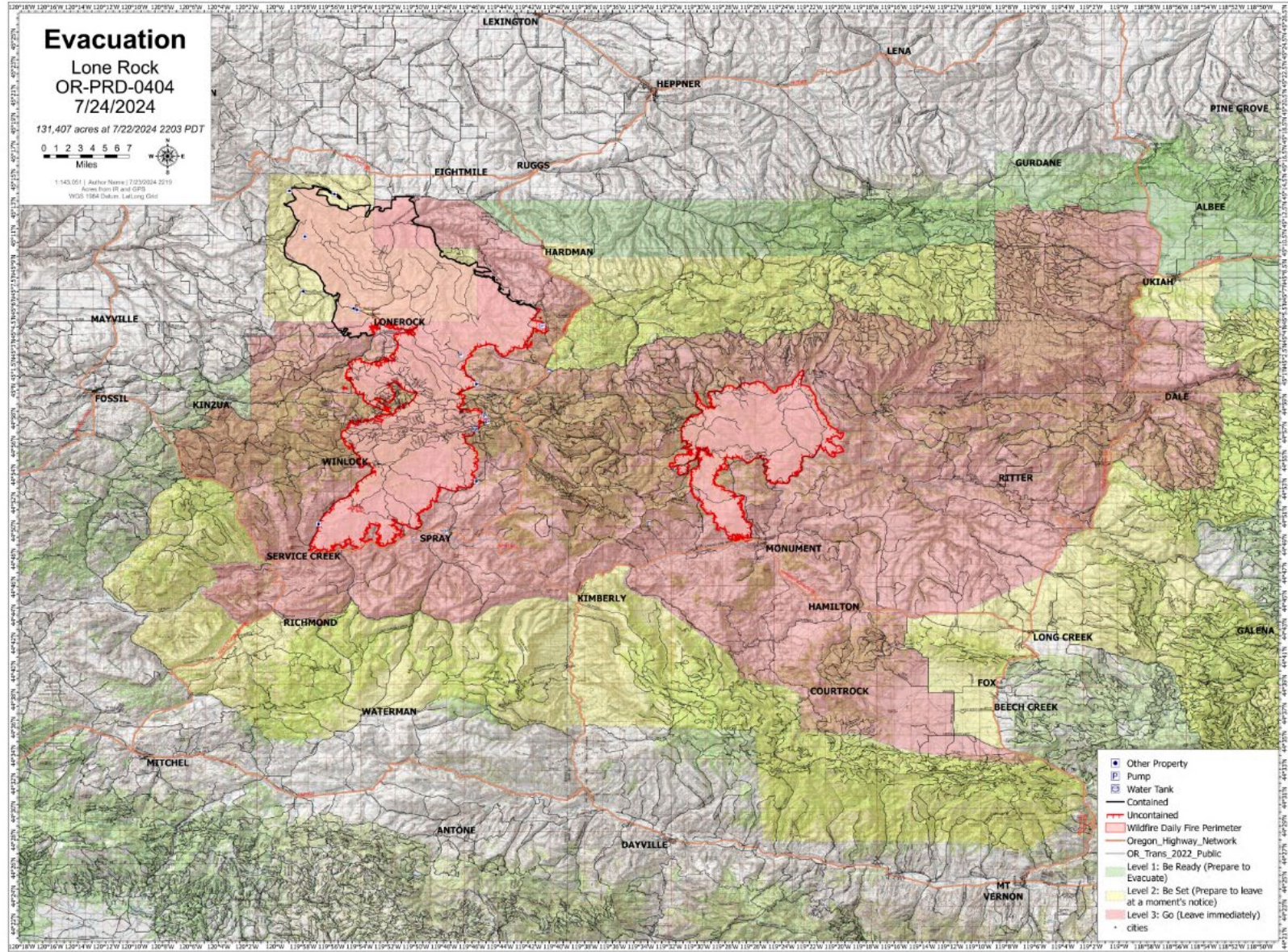
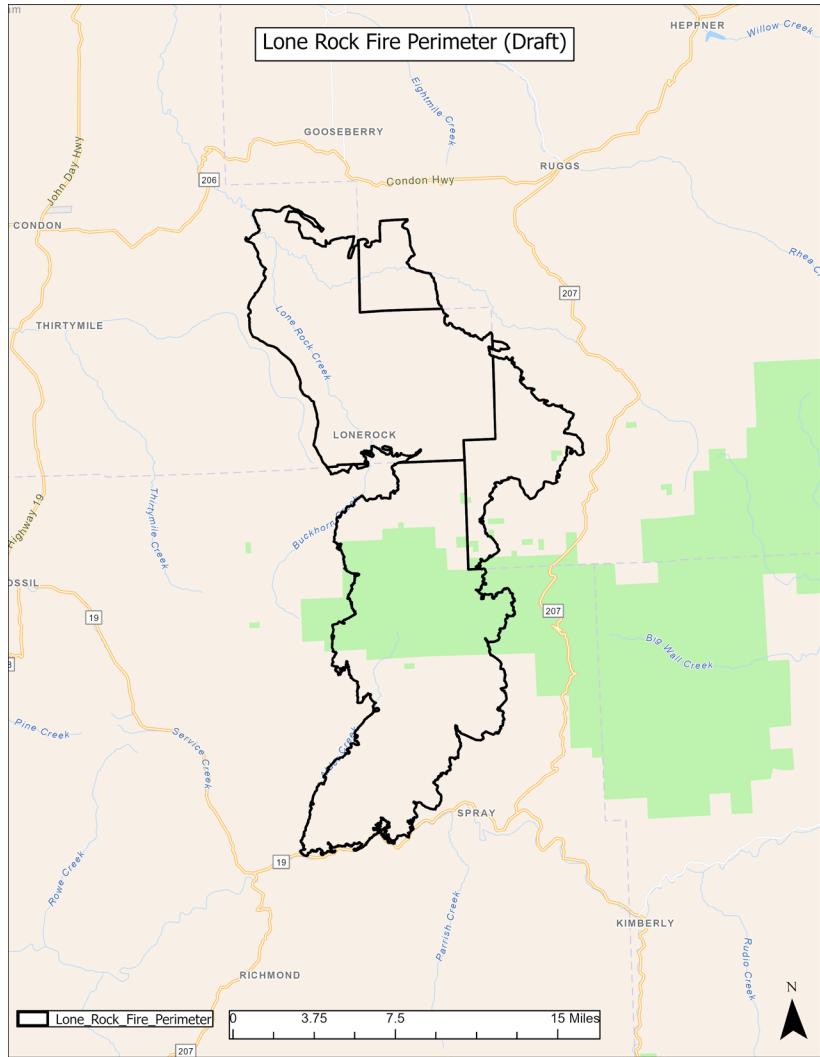
## NRCS

- Jennifer Wilson: District Conservationist
- Kacee Lathrop: Basin Resource Conservationist
- Jacque Wilson: Administrative Program Support Specialist
- Jamie Dunn: Natural Resource Specialist
- Keira Klein: Soil Conservationist
- Garrett Robinson: Soil Conservationist

## SWCD

- Kevin Payne: Morrow County District Manager
- Jared Huddleston: Morrow County Natural Resource Project Manager

# Fire Map



- ✓ **FSA Disaster Assistance Overview**
- ✓ **Disaster Assistance for Hurricanes, Drought & Wildfires**
- ✓ **Eligibility and Payment Details**
- ✓ **Additional FSA and USDA Resources**



# Weather-Related Natural Disasters



- Blizzards
- Fire
- Hurricane/Typhoon
- Excessive Moisture/Flood
- Excessive Winds/Tornados



- Drought
- Hail
- Volcanic Eruption/Emissions
- Freeze
- Earthquake



# Disaster Assistance Programs at a Glance



## Farm Programs

- Direct Payments
  - Livestock Forage Disaster Program (LFP)
  - Livestock Indemnity Program (LIP)
  - Emergency Assistance for Livestock, Honeybees, and Farm-Raised Fish Program (ELAP)
- Conservation
  - Emergency Conservation Program (ECP)
  - Emergency Forest Restoration Program (EFRP)
  - Emergency Grazing

## Farm Loans

- Emergency Loans
- Operating Loans
  - Annual Operating Loan
  - Term Operating Loan
- Farm Ownership Loans
- Disaster Set Aside Program



# Direct Payments

- **Livestock Indemnity Program (LIP)**
  - Livestock Owners/Contract Growers.
  - Pays on livestock deaths in-excess-of normal mortality rates.
  - Covers death losses or livestock sold at a reduced sale and payments for grazing losses from drought/fire

## **What we need:**

- Notice of loss
  - Filed with the FSA Office before March 3, 2025
- Proof of death (notes, pictures, 3<sup>rd</sup> party certification, etc.)
- Proof of normal mortality (any time in 2024)
- Copy of contract grower documentation (if applicable)

# Direct Payments

- **Livestock Forage Disaster Programs (LFP)**
  - Pays on grazing losses due to drought
  - Pays on grazing losses due to Fire on Federally Managed Lands

## What we need:

- Livestock numbers affected by the fire/drought
- Farm/tract information
- Copy of contract grower documentation (if applicable)
- BLM/USFS leases and statement from the applicable agency stating the ground cannot be grazed/ must be rested due to wildfire



# Direct Payments

- **Emergency Assistance for Livestock, Honey-Bee & Farm Raised Fish Program (ELAP) - Water Hauling**
  - Helps off-set the cost of water hauled to livestock

## **What we need:**

- Proof of permanent water source prior to disaster
- Worksheets that keep track of gallons/number of livestock
- Tract map showing where the water is being hauled
- Leases or CCC-855 (handshake lease agreement form)



# Direct Payments

- **Emergency Assistance for Livestock, Honey-Bee & Farm Raised Fish Program (ELAP) - Hay/Livestock Transportation**
  - Helps off-set the cost of hauling hay/livestock that is not normal for your operation

## **What we need:**

- Worksheets that keeps track of normal mileage and current year mileage and number of loads
- Tract map showing where the livestock was hauled
- Leases or CCC-855 (handshake lease agreement form)



# Direct Payments

- **Emergency Assistance for Livestock, Honey-Bee & Farm Raised Fish Program (ELAP) - Additional Feed Purchases**
  - Helps off-set the costs of extra/above normal amounts of feed purchased due to a disaster event

## What we need:

- A breakdown of what you would normally buy and what you bought in the disaster year
- Receipts from additional purchases
- Leases or CCC-855 (handshake lease agreement form)

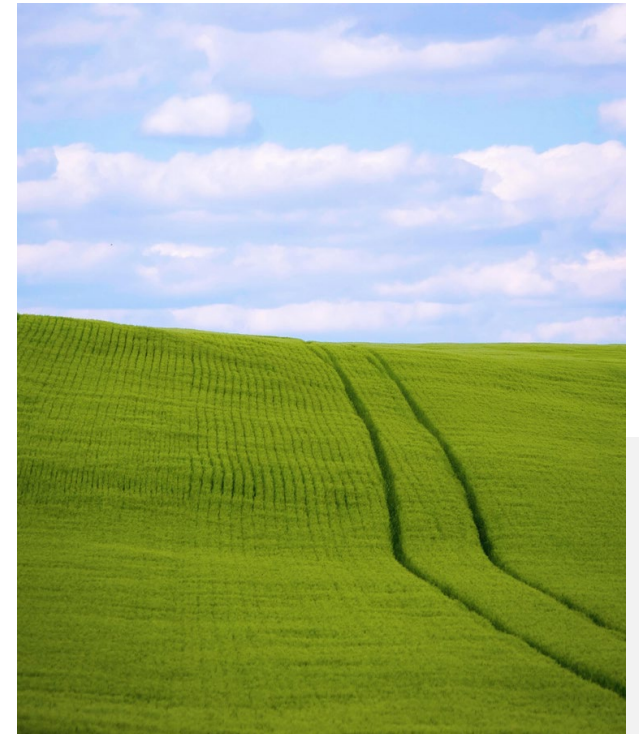


## Direct Payments

- **Emergency Assistance for Livestock, Honey-Bee & Farm Raised Fish Program (ELAP) Loss of Grazing Ground**
  - For producers that lost grazing ground that is privately leased or owned

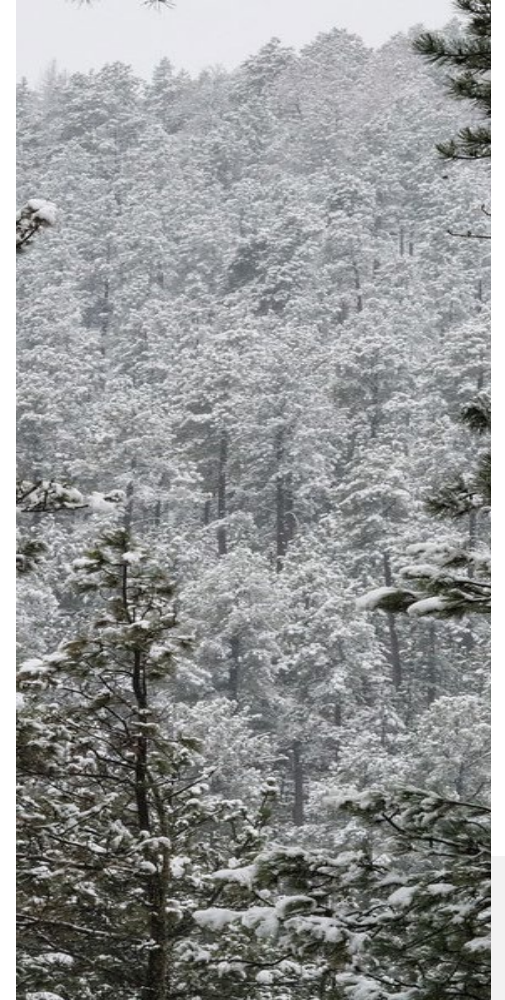
### **What we need:**

- Type of livestock affected
- Type of pasture affected (native or planted)
- Number of acres affected
- Number of grazing days lost (per calendar year)
- Leases or CCC-855 (handshake lease agreement form)



# Conservation Programs

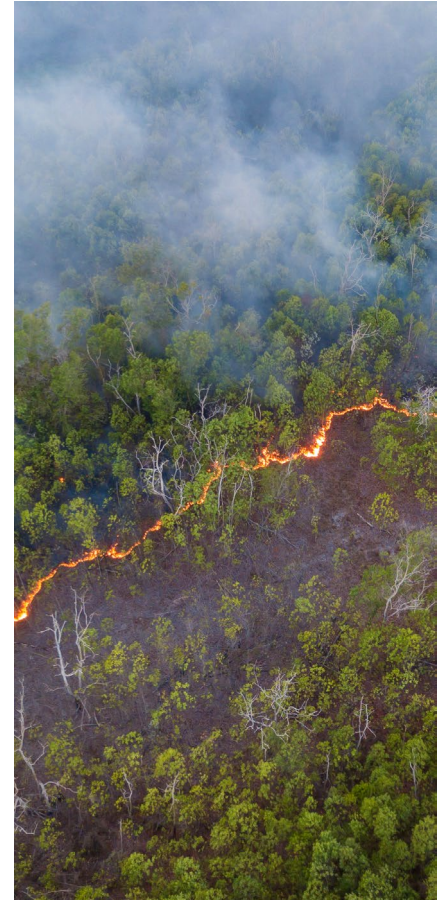
- **Emergency Forest Restoration Program (EFRP)**
  - Provides payments to eligible owners of nonindustrial private forest land for emergency measures to restore land damaged by a natural disaster.
  - County Committee determines land eligibility.
    - Land must have (or had) existing tree cover
    - Be owned by any nonindustrial private individual, group, association corporation, or other private legal entity
- Up to 75% cost share to implement approved restoration practices



# Conservation Programs

## Emergency Conservation Program (ECP)

- Rehabilitate farmland and conservation structures damaged by natural disasters.
- Up to 75% cost share available to implement approved restoration practices.
- Up to 90% cost share for beginning, limited resource, and historically underserved farmers and ranchers (does not include female).



**Farm  
Service  
Agency**

**[fsa.usda.gov](https://fsa.usda.gov)**



# ECP Cost Share Rates

## 2024 Fencing Rates

**Tear Out:** \$1.40/ft

**New Build:**

- Non-Difficult Terrain \$5.99/ft
- Difficult Terrain \$8.23/ft

**Repair: ?**

- Please contact the office to determine if you qualify for the 75% or 90% flat rate.

# Conservation Programs

- **Emergency Conservation Program (ECP)**

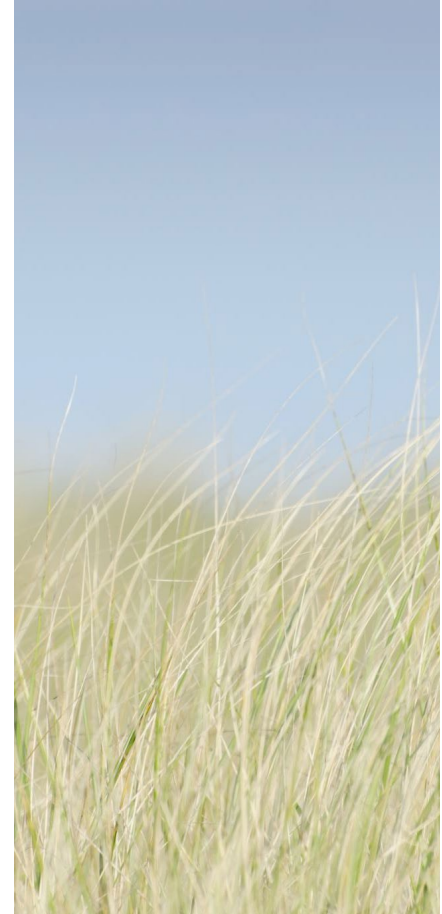
- **Getting Started: Restoring Fences**

- Producer will go over fence lines affected with county office to determine the total amount of footage of fence they wish to replaced.
- Owners determine who will rebuild border fences.
- The fence line must be rebuilt in the same spot as original fence line.
- Once footage and fence lines are determined, county office will submit producer's application.
- County office will notify producer when they can start working on the fence.

# Conservation Programs

## CRP Emergency Grazing – Open until March 1<sup>st</sup> , 2025

- The owner of the ground must contact the office to give permission to release information to grazer.
- OR there must be a lease in place that clearly states CRP grazing is permitted.
- **Grazer needs to clearly state:**
  - What CRP fields they would like to graze.
  - How many acres of range ground is fenced in with CRP.
  - How many head they would like to turn out.
  - How many days they would like to graze (90 days is the maximum for emergency grazing).



# Conservation Programs

## CRP Emergency Grazing

- NRCS will draw up conservation plan stating how long grazing can take place.
- Grazer and ALL individuals on the CRP contract must sign all grazing documentation.
- ALL grazing documentation must be signed by **ALL** individuals **BEFORE** cows can be turned into CRP
- Once cattle are removed from CRP, all individuals must sign CRP-118 stating the cattle have been removed.



# Do you have burned CRP or CREP Acres?

- Contact FSA and NRCS
- We will note what contracts/fields have burned
- We will wait.....
- Next late Spring or early Fall 2025 NRCS and/or SWCD will complete field review to assess the damages
- We may wait some more....
- County Committee will eventually determine if the cost to re-establish outweighs the benefits of the project if the grasses, etc do not recover and meet specifications

# FSA Emergency Loans: Disaster Designations

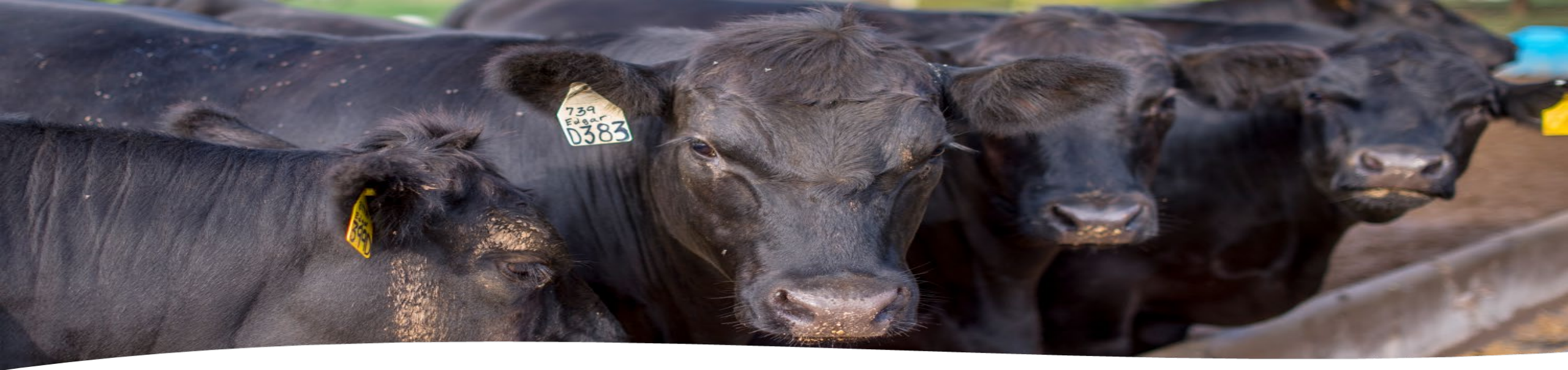
**There are four types of disaster designations that may contribute toward eligibility for United States Department of Agriculture (USDA) Emergency Loan programs:**

1. Presidential major disaster declaration;
2. USDA Secretarial disaster designation;
3. Farm Service Agency (FSA) Administrator's Physical Loss Notification and,
4. FSA Quarantine designation.

## Emergency Loans

- Restore/replace essential property losses, living expenses, production costs associated with disaster.
- Applicable to producers in Presidential or Secretarial disaster areas. (contiguous counties also eligible).
- Experienced 30% production loss in crops or
- Experienced 30% physical loss to livestock, livestock products, equipment or property.
- Loan funds available for up to 100% of actual production or physical loss incurred (not exceeding \$500,000).





## Operating Loans

### Annual Operating Loan

- Can be used to purchase annual expenses (fuel, hay, supplies, etc.)

### Term Operating Loan

- Can be used for capital expenditures (equipment, livestock, fence, outbuildings, etc.)

Operating loans can be repaid in 1-7 years.  
Limit is \$400,000.

**Farm  
Service  
Agency**

**[fsa.usda.gov](https://fsa.usda.gov)**





## Farm Ownership Loan

### Ownership loans can be used to pay for:

- Land purchases
- Capital improvements
- Soil and water conservation
- Loan closing and related expenses
- Repairs to property (fence, outbuildings, primary residence, etc.)

Farm Ownership loans can be repaid in up to 40 years. Limit \$600,000

**Farm  
Service  
Agency**

**[fsa.usda.gov](https://fsa.usda.gov)**

# Disaster Set Aside Program

- Designated disaster areas or contiguous (adjoining) counties are unable to make their scheduled payment on any FSA debt.
- Existing borrowers that had losses due the disaster can move their next scheduled installment to the end of their loan term
- Borrowers have eight months from the date of designation to apply



# What to bring: Your first visit



**Copy of recorded deed, survey plat, rental, or lease agreement of the land. You do not have to own property to participate in FSA programs.**

**Entities: corporation, estate, or trust documents**



United States  
Department of  
Agriculture



# FSA Will Then

Enroll your farm or ranch in the FSA database

Create a map outlining farm or ranch  
boundaries with acreage figures

Assign you a Farm Serial Number (FSN)

Provide you with routine program notifications

**Farm  
Service  
Agency**

**[fsa.usda.gov](https://fsa.usda.gov)**

# Signatures

- **Electronic signatures through our Box/ One-Span are accepted.**
- **Need updated emails and phone number.**



# Wrap Up

## FSA Programs Offered & Payment Limit (Max dollars)

- **LIP**– Livestock death above the normal mortality rate. **No \$ limit**
- **LFP** – Grazing Losses due to drought on all grazing ground **OR** fire on federally managed land. **\$125,000 Limit per person or legal entity**
- **ELAP**– Water Hauling, Livestock Transportation, Feed Transportation, Additional Feed Costs, Grazing Loss on private ground. **No \$ limit**
- **EFRP** – Restoring private land damaged by natural disaster. **\$500,000 per person or legal entity, per disaster**
- **ECP**– Tear out and new/repair of fencing cost share. **\$500,000 per person or legal entity per disaster**
- **CRP Emergency Grazing**– Available for fire affected producers.

# Wrap Up

## Farm Loans Offered

### Operating Loans

- **Annual:** Can be used to purchase hay, or any other annual expenses (fuel, pasture expenses, vet, supplies, etc.)
- **Term:** Can be used for capital expenditures- equipment, livestock, minor improvements to owned property (fence, outbuildings, etc.)

### Farm Ownership Loans

- Can be used for repairs to property (Fence, outbuildings, primary residence, etc.)

### Emergency Loans

- Replace physical or production losses due to the fire

### Disaster Set Aside

- Existing borrowers that had losses due to the disaster, can move their next scheduled installment to the end of their loan term.

# Gilliam/Wheeler and Morrow County Staff

## Gilliam/Wheeler County USDA Service Center

**FSA:** 541-384-4251, Ext 2 – Adrianna, Kara, Kayla, Kaycee

**NRCS:** 541-384-2281 – DelRae, Jessica, Joel

**Gilliam SWCD:** 541-384-2672 – Herb, Norie, Roger, Jessica, Katie

**Wheeler SWCD:** 541-468-2990 – Cassi, Ayla, Brooke, Kristin, Maria

## Morrow County USDA Service Center

**FSA:** 541-676-9011, Ext 2 – Adrianna, Adam, Misty, Kim, Tasha

**NRCS:** 541-979-5021 – Jennifer, Kacee, Keira, Garrett, Jamie, Jacque

**SWCD:** 541-676-5452 – Kevin and Jared



# Questions

